

Network Video Recorder

Quick Start Guide

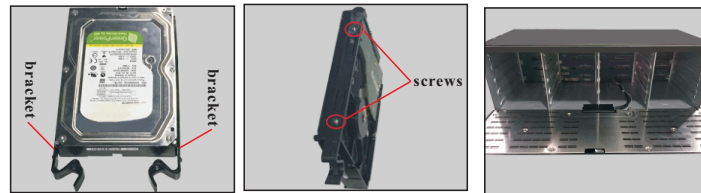
1. Notes

- Please read this instruction carefully before using the product and keep it for further reference.
- All the examples and pictures used here are for reference only.
- The contents of this manual are subject to change without notice.
- This device should be operated only from the type of power source indicated on the marking label. The voltage of the power must be verified before using the same.
- Please check the device and the accessories after getting the device. If there are any damages, shortages or defects, please contact your dealer immediately.

2. HDD Installation

This series of the product supports 16 SATA hard drives. Please make sure that the device is powered off before the installation.

- ① Fix the two brackets onto the both side of the HDD with screws as shown below.
- ② Open the front panel of the device.



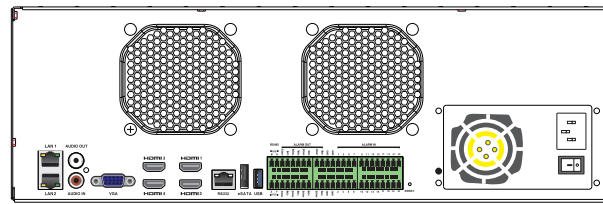
- ③ Hold the handles of the two brackets and push the HDD into the HDD slot. Clamp the HDD to make sure the HDD is installed successfully.
- ④ Install the remaining HDDs according to the above-mentioned method.



Tips : Hold the handles of the two brackets to pull out the HDD.

3. Rear Panel Instruction

The interfaces of the rear panel are for reference only.



Name	Description
LAN1/2	Ethernet port
AUDIO OUT	Audio output connector
AUDIO IN	Audio input connector
VGA	Connect to monitor
HDMI1/2/3/4	Connect to high definition display device
RS232	Connector for RS 232
E-SATA	Connector for the external HDD with E-SATA interface
USB	Connector for USB devices (like USB mouse, USB storage device)
P/Z	Connector for a PTZ device. Y is TX+, Z is TX-
K/B	Connector for a keyboard. A is TX+, B is TX-
GND & ALARM IN	Connectors for alarm input devices, like sensors
ALARM OUT	Relay output; connectors for external alarm output devices
Reset	Restore to the factory default settings

4. Startup & Shutdown

► Startup

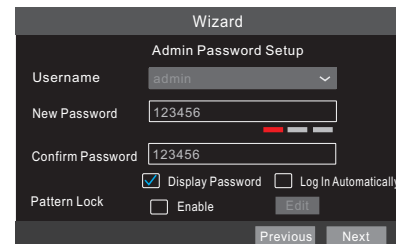
- ① Connect the monitor and the power.
- ② The device will boot and the power indicator will display blue.
- ③ A wizard window will pop up.

► Shutdown

Click “Start” and select “Shutdown” icon. This will bring a shutdown window. The device will shut down by clicking “OK” button. Then disconnect the power.

5. Login

You must configure the wizard if you start the NVR for the first time. Choose the language and read the privacy statement. Then set the data, time and zone as needed. After that, set the login password.



The default username is **admin** and the default password of admin is **123456**. Set your own password or use the default one when you use the wizard for

the first time. Enable pattern lock and click “Edit” to set the pattern lock. Then set security questions and answers. It is important for you to remember these answers, or you will not be able to reset your password. Click “Next” to continue.

6. Disk Settings

You can view the disk number, disk capacity of the NVR and serial number, Read/Write status of the disk. Click “Format” to format the disk. Click “Next” to continue.

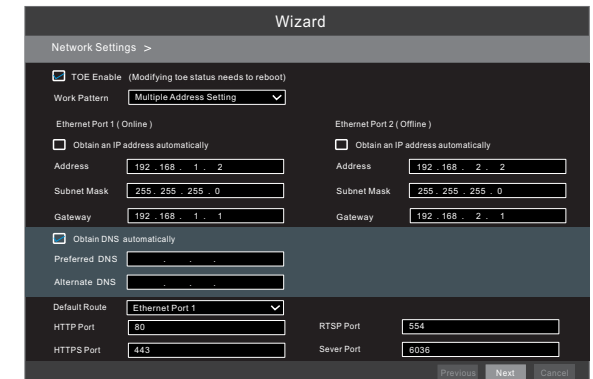
7. Network Configuration & Add IP Camera

① TOE: If it is enabled, the multiple address setting or network fault tolerance can be chosen and configured. If it is disabled, the network fault tolerance is unavailable. Network Fault Tolerance: Bind two network ports to one IP address. This pattern can increase the network bandwidth and form a network redundant array to share the load. When one port goes wrong, the other port will take over the entire load immediately and seamlessly.

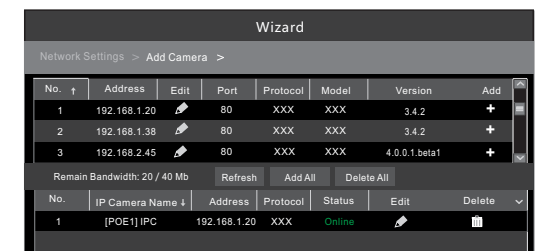
Multiple Address Setting: You shall set the IP address, subnet mask, gateway and DNS of each Ethernet port respectively.

Select the work pattern and then enter IP address, subnet mask, gateway, etc. If using DHCP, please enable DHCP in both the NVR and the router.

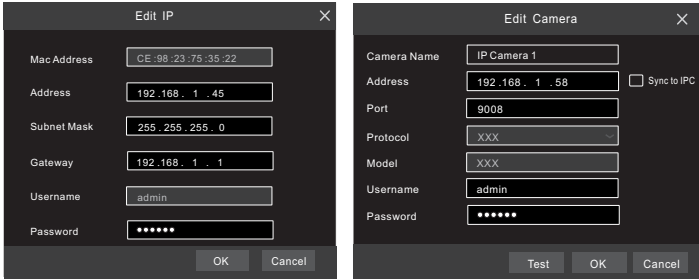
② Enter HTTP port (the default value is 80) and server port (the default port is 6036).



③ Add Camera. Click “Next” to go to the following interface.



Click “Refresh” to refresh the list of online IP cameras which are in the same local network with the NVR. Click + to add the searched camera. Click “Add All” to add all the cameras in the list. Click to delete the added camera. Click “Delete All” to delete all the added cameras.

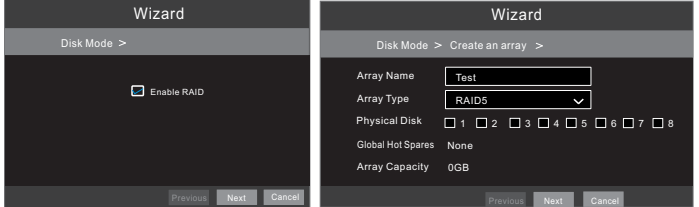


④ Click to edit an IP camera as shown on the above left. Enter the new IP address, subnet mask, gateway, username and password of the camera. Click “OK” to save the settings.

Click to edit the added camera as shown on the above right. Enter the new camera name, IP address, port, username and the password of the camera. You can click “Test” to test the effectiveness of the input information. Click “OK” to save the settings. You can change the IP camera name only when the added camera is online. Click “Next” to continue.

8. RAID Settings

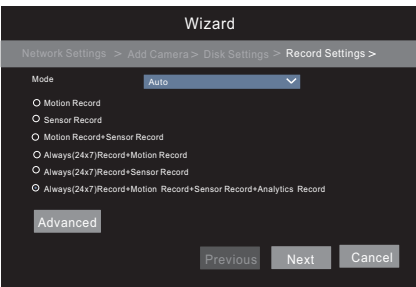
Check “Enable RAID” and then the device will automatically reboot. Then enter Wizard and create an array. The authority authentication box will pop up when creating an array. Please enter the username (admin) and password you set before.



Set array name, array type and physical disk as needed (See Disk Management of User Manual for more details). Then click “Next”.

9. Record Settings

Two record modes: auto and manual.
Auto Mode: Select one auto mode in the interface as shown below and then click “Next” to save the settings. Click “Advanced” to self-define a record mode.



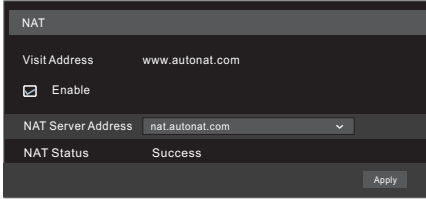
Manual: Set the “Sensor Record”, “Motion Record”, “Analytics Record” and “Schedule Record” of each camera. Please enable the record as needed. Click “Next” to continue.

10. NAT

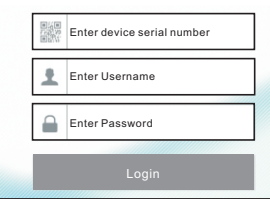
You can enable the NAT function in the interface or set it in the network configuration after exiting the wizard. You can scan the QR code through the mobile surveillance APP available for iOS or Android to easily view your cameras.

► Web Browser Access Through NAT Function

① Go to Start → Settings → Network → NAT tab. Enable NAT and select the NAT Server Address. Click “Apply” to save the parameters.



Enter www.autonat.com in the address bar of your browser and then press enter to go to the following interface. If you are the first time to access the NAT, you shall download and install the plug-in according to the popup tips. After that, re-open your web browser and enter the above-mentioned address. Then the login box will appear. Enter the device serial number, username and password.



Device Serial Number: Click on the menu bar at the bottom of the live

interface (or go to NAT interface or System→Information→Basic interface) to view the serial number.

Username: The username of the NVR. The default username is admin.
Password: The password of the NVR. The password is set by yourself when you configure the wizard for the first time.

11. Manual Recording

Before recording, please install a HDD. In the live interface you can see the menu toolbar. Click button to start recording. Click it again to stop recording. You can also click to check the status of the recording.



12. Playback

► Instant playback

Click “Instant Playback” in the right-click menu of the camera’s preview window to select or drag the playback progress bar to change the playback time to play back the record.

► General playback

Click on the tool bar at the bottom of the live view interface or click Start → Playback to go to the playback interface as shown below. You can also add the playback cameras manually. Click in the playback window to pop up the “Add Camera” window. Check the cameras in the window and then click “Add” to add playback camera. The record files of the added playback camera will be played in the playback interface.

