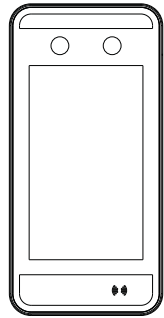
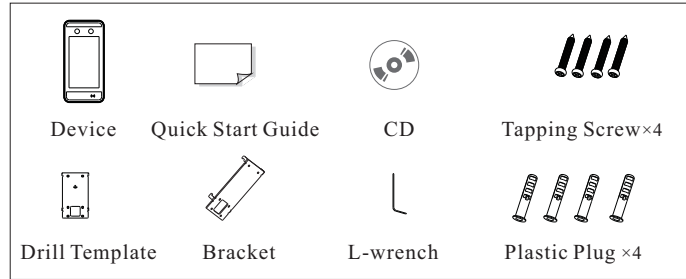


# Face Recognition Terminal

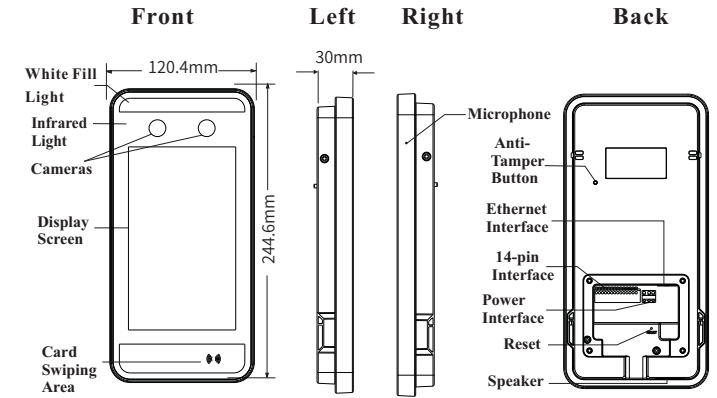
## Quick Start Guide



### 1 Package



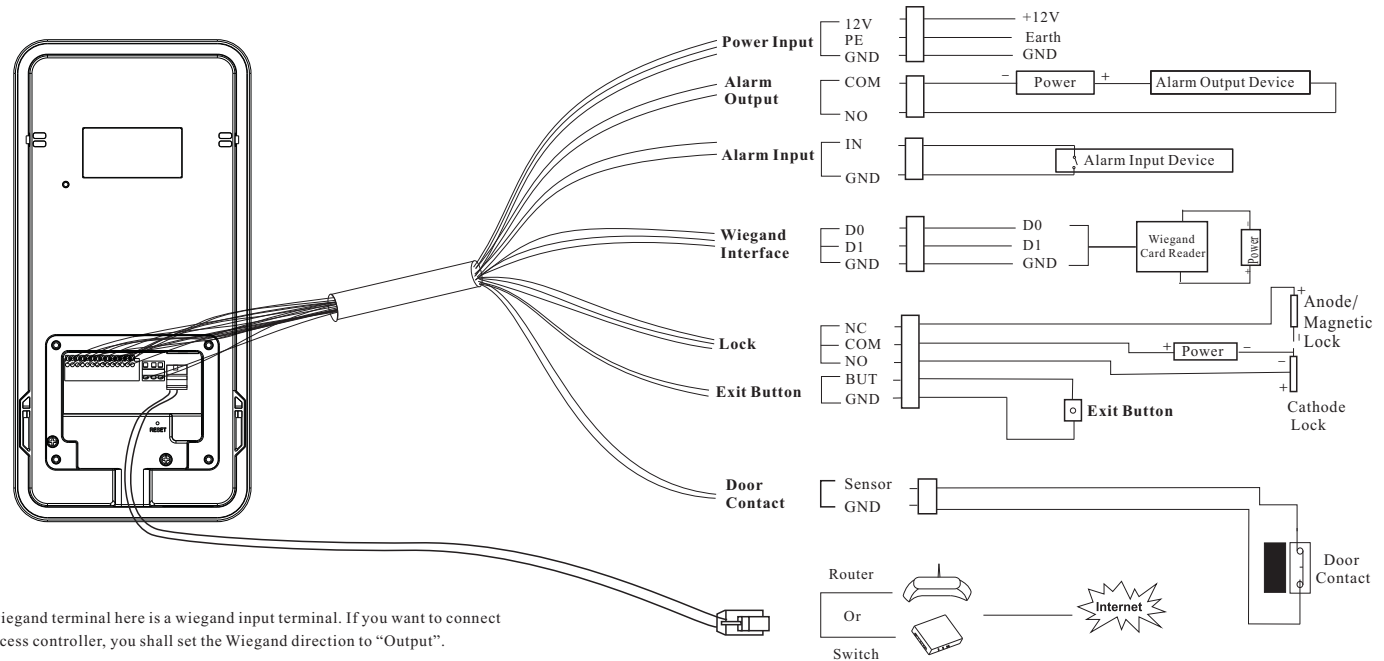
### 2 Overview



### 3 Cable Connection

14-pin Interface

1	2	3	4	5	6	7	8	9	10	11	12	13	14
NO	COM	NO	COM	NC	GND	SEN	IN	GND	D0	D1	GND	BUT	GND
Alarm output		Lock interface		Door contact interface		Alarm input		Wiegand interface			Exit Button Connector		



**Note:**  
\* The wiegand terminal here is a wiegand input terminal. If you want to connect to an access controller, you shall set the Wiegand direction to "Output".

#### About This Manual

All pictures, images, icons and snapshots in this manual are for reference only. If there is inconsistency between the manual and the actual product, the actual product shall prevail. The manual will be updated according to the product improvement and are subject to change without prior written notice.

#### Legal Disclaimer

To the maximum extent permitted by applicable law, the product described, with its hardware, software, software and firmware, is provided "as is", with all faults and errors, and our company makes no warranties, express or implied, including particular purpose, and non-infringement of third party. In no event will our company, offices, or agents be liable to you for any special, consequential, incidental, or indirect damages, including, among others, damages for loss of business profits, business interruption, or loss of data or documentation, in connection with the use of this product, even if our company has been advised of the possibility of such damages. With regard to the product with internet access, the use of product shall be wholly at your own risks. Our company shall be irresponsible for abnormal operation, privacy leakage or other damages resulting from cyber attack, hacker attack, virus inspection, or other internet security risks; however, our company will provide timely technical support if necessary. During the use of the device, please strictly abide by applicable law. In the event of any conflicts between this manual and the applicable law, the later prevails.

#### Installation and Use

Please use our product according to the following safety instructions and warnings.

Do not place the camera in extremely hot, cold, dusty or damp location.

Do not expose it to high electromagnetic radiation.

If the product does not work properly, please contact your dealer or the nearest service center.

Never attempt to disassemble the camera yourself. (We shall not be responsible for any problems caused by unauthorized repair or maintenance.)

Do not drop the camera or subject it to physical shock.

Keep away from liquid while in use.

Do not touch the screen with sharp objects.

If cleaning is necessary, please use clean cloth to wipe it gently, avoiding water or alcohol.

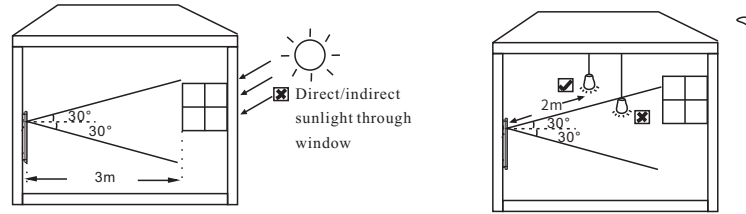
## 4 Installation

### Ambient Illumination Requirement

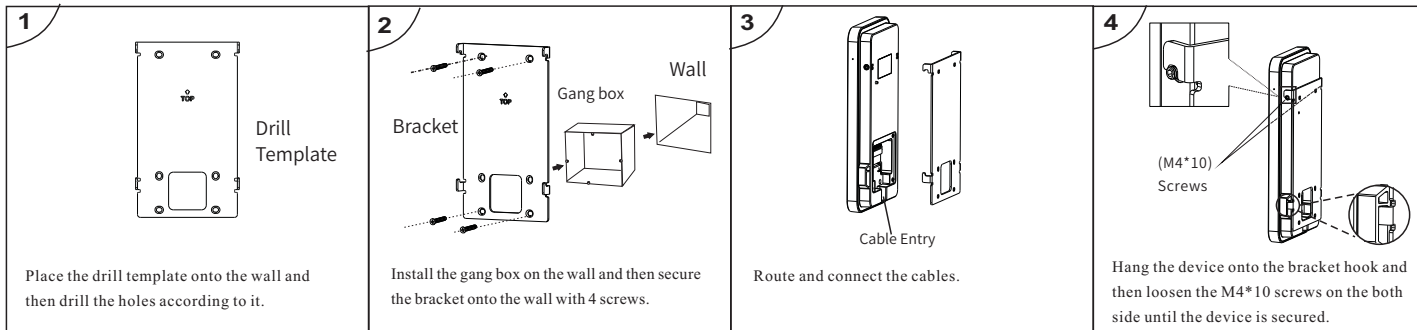
Make sure faces can be captured clearly.

Avoid direct sunlight and backlight.

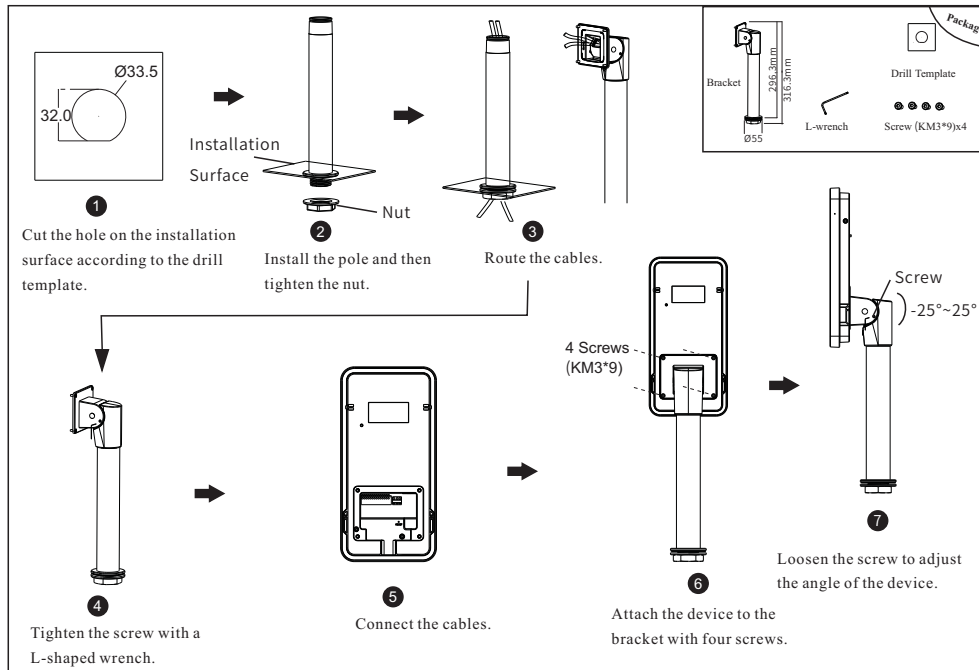
The device should be at least 2 meters away from the light, and at least 3 meters away from the window or door.



### Installation

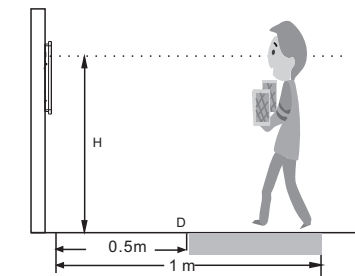


### Pole Mounting



Note: Pole mounting bracket is not supplied with the device by default.

### Height Requirement

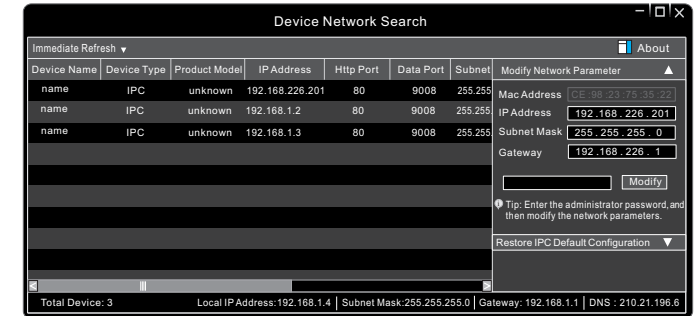


- The recommended installation height (H) is 1.45m. It can be adjusted according to the actual scene. The ideal face recognition distance (D) ranges from 0.5m to 1m. The human height range can be covered as shown in the following table.

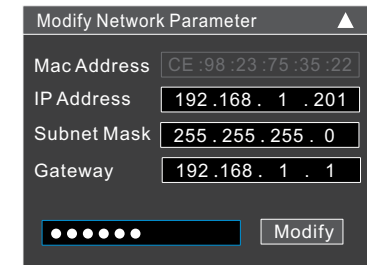
H	D	Human Height Range
1.45m	0.5m	120cm~185CM
	1m	120cm~210CM

## 5 Network Connection

- Make sure that the device and the PC are well connected via LAN.
- Find the IP-Tool from the CD and then install it in the computer. After that, run the IP-Tool as shown below.



- Modify the IP address. The default IP address of this camera is 192.168.226.201. Click the information of the camera listed in the above table to show the network information on the right hand. Modify the IP address and gateway of the camera and make sure its network address is in the same local network segment as that of the computer. Please modify the IP address of your device according to the practical situation.



After modification, please enter the password of the administrator and click “Modify” button to modify the settings.

**⚠** The default password of the administrator is “123456”.

④ Double-click the camera listed in the IP-Tool or manually enter the IP address in the address bar of the web browser to connect IP-CAM.

Then follow directions to download and install the plugin.

⑤ Enter the username and password in the login interface.

**⚠** The default username is *admin*; the default password is *123456*.