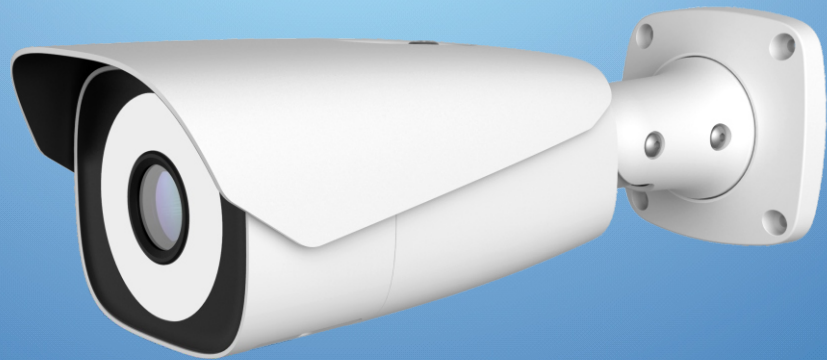


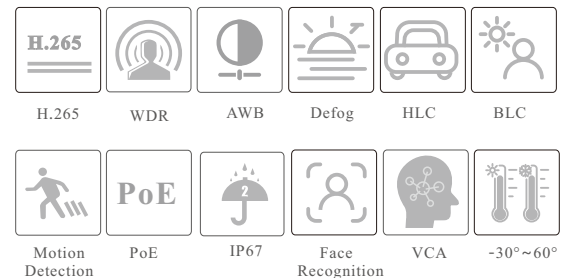
CAMERA

TD-9423A3-FR

2MP HD Face Recognition
Network Camera



- Starlight, area light
- 1080P (1920 × 1080) @30fps
- Support SMART H.265/H.264 coding
- 10m white light view distance; motorized zoom lens
- 3D DNR, true WDR, HLC, BLC and ROI coding
- Built-in micro SD card slot, up to 256GB
- 1CH audio input; 1CH audio output
- DC12V/PoE power supply
- Support face exposure
- Support three streams
- Support mobile surveillance by smart phones or tablet PCs with iOS and Android OS
- Intelligent analytics: video exception detection(scene change, video blur detection, abnormal color detection), face detection, face capture, face match



en.tvt.net.cn

For more information, please visit our website

Shenzhen TVT DIGITAL TECHNOLOGY CO., LTD.

Address: 23rd Floor, Block B4, Building NO.9, Shenzhen Bay Eco-Technology Park, Nanshan District, Shenzhen, Guangdong Province, P.R.China

Tel: +86-755-36995888

Web site: <http://en.tvt.net.cn>

Fax: +86-755-33104777

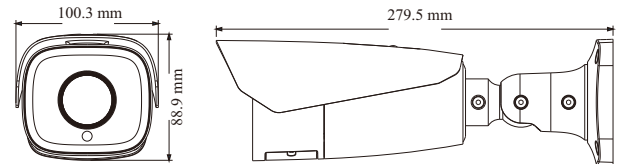
E-mail: overseas@tvt.net.cn

SPECIFICATIONS

Model	TD-9423A3-FR
Specifications	
Camera	
Image Sensor	1 / 2.8 "CMOS
Image Size	1920 × 1080
Electronic Shutter	1 / 3 s ~ 1 / 100000 s
Iris Type	DC-IRIS
Min. Illumination	0.005 lux@F1.6, AGC ON; 0 lux with LED
Lens	7~22mm@F1.6, motorized; Recommended face capturing distance: 4~10m
Field of View	Horizontal: 44°~17.6°; Vertical: 25.6°~10°; Diagonal: 49.7°~20.2°
Lens Mount	Φ14
Wide Dynamic Range	120dB
BLC	Yes
HLC	Yes
Defog	Yes
Digital NR	3D DNR
Angle Adjustment	Pan: 0°~360°; Tilt: 0°~90°; Rotation: 0°~360°
Image	
Video Compression	Main stream: Smart H.265 / H.265+ / H.265 / Smart H.264 / H.264+ / H.264 Sub stream: H.265+ / H.265 / H.264+ / H.264 / MJPEG Third stream: H.265+ / H.265 / H.264+ / H.264 / MJPEG
H.264 Compression Standard	Baseline Profile/Main Profile/High Profile
Resolution	1080P (1920 × 1080), 720P (1280 × 720), D1, CIF, 480 × 240
Main Stream	1080P/720P (60Hz: 1~30fps; 50Hz: 1~25fps)
Sub Stream	720P/D1/CIF/480 × 240 (60Hz: 1~30fps; 50Hz: 1~25fps)
Third Stream	D1/CIF/480 × 240 (60Hz: 1~30fps; 50Hz: 1~25fps)
Bit Rate	64 Kbps ~ 6 Mbps
Bit Rate Type	VBR / CBR
Image Settings	ROI, Saturation, Brightness, Chroma, Contrast, Wide Dynamic, Sharpen, NR, etc. adjustable through client software or web browser
Audio Compression	G711A/U
ROI	Each ROI to be configured separately
Interfaces	
Network	RJ 45
Video Output	No
Audio	1CH audio input; 1CH audio output
Storage	Built-in micro SD card slot, up to 256GB
Reset	Yes
Alarm	1CH alarm input; 1CH alarm output
Functions	
Remote Monitoring	Web Browser/TVT NVMS2.0/NVR/mobile APP
Web Browser	IE11(plug-in required)/Chrome 89.0+/Edge 89.0+/Firefox 87.0+/Safari 14.0+
Online Connection	Support simultaneous monitoring for up to 10 users; Support multi-stream real time transmission
Network Protocol	UDP, IPv4, IPv6, DHCP, NTP, RTSP, RTP, RTMP, RTCP, PPPoE, DDNS, SMTP, FTP, SNMP, HTTP, HTTP POST, 802.1x, UPnP, HTTPS, QoS
Interface Protocol	ONVIF
Storage	Network remote storage; micro SD card storage
Smart Alarm	Motion detection; Sensor alarm; SD card full; SD card error; IP address conflict; Network disconnection
Intelligent Analytics	Face detection, face capture, face match, video blur detection, abnormal color detection, scene change detection
General Function	Watermark, video mask, heartbeat, corridor pattern, face exposure
Security	Video encryption, firmware encryption, HTTPS encryption, configuration encryption, failure login lock, IP address filtering, 802.1x authentication, basic and digest authentication for HTTP
PoE	Yes (802.3af)
LED View Distance	10 m soft light
Ingress Protection	IP 67
Face Detection	
Face Detection	Pupil distance of a facial image over 20 pixel can be detected
Face Capturing	Output the most effective face snapshots by precise detecting, tracing, capturing, scoring and screening the moving faces
Panorama Capturing	Support panorama capturing and self-defined information overlay, like device ID, time, etc.

Intelligent Light Compensation	Built-in high efficient white light LEDs, time switch available
Face Picture Database	10000 face pictures
Database Management	Add, modify, delete and search face pictures
Face Picture Adding	Add face pictures through WEB and Face Album Manager Tool
External Face Picture Enrollment	Size: less than 70KB Format: jpg, jpeg
Face Picture Comparison Alarm	Support face trigger modes Support allow list, block list, stranger alarms
Others	
Power Supply	DC12V/PoE
Power Consumption	< 12W
Storage Conditions	- 30 °C ~ 65°C (-22°F~149°F), Humidity: less than 95 % (non-condensing)
Operating Conditions	- 30 °C ~ 60 °C (-22°F~140°F), Humidity: less than 95 % (non-condensing)
Dimensions (mm)	279.5 × 100.3 × 88.9
Weight (net)	Approx. 1.04KG
Installation	Wall mounting; ceiling mounting
Certificate	CE, FCC
Environmental Protection	Complies with Directive EU RoHS, WEEE(2012/19/EU), directive 94/62/EC and REACH(EC1907/2006)

DIMENSIONS



AVAILABLE ACCESSORIES



AVAILABLE MODEL

Available Model	TD-9423A3-FR	Motorized zoom lens
-----------------	--------------	---------------------