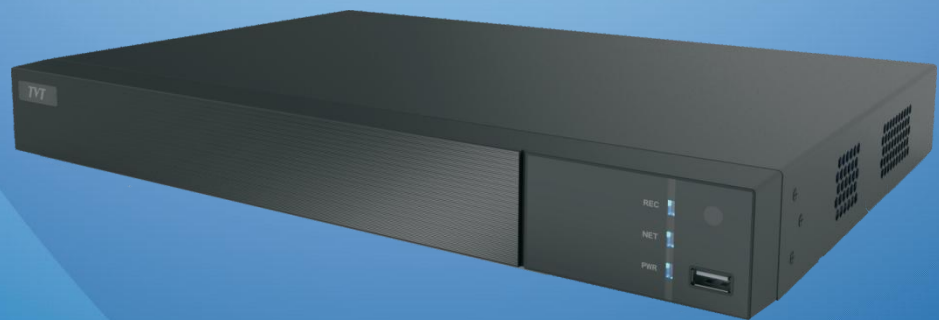


TD-1102D

Decoder



With the high-performance SOC decoding chip and stable and reliable Linux OS, TD-1102D can be excellently served to the high-definition surveillance system. It not only supports multi-channel standard-definition and high-definition network videos decoded on video wall independently, but also it can be managed in an integrated way by video surveillance management platform. Moreover, it also has lots of advanced and convenient functions, such as H.264/H.265, device superior-subordinate management, window opening, roaming and so on.

Therefore, this decoder can be widely used in banks, schools, intelligent buildings, transportation, environmental protection, supermarkets, gasoline stations, housing estates, factories, etc.

Shenzhen TVT Digital Technology Co., LTD.

Address: 23rd Floor, Block B4, Building NO.9, Shenzhen Bay Eco-Technology Park, Nanshan District, Shenzhen, Guangdong Province, P.R. China

Tel: +86-755-36995888

Website: <http://en.tvt.net.cn>

Fax: +86-755-33104777

E-mail: overseas@tvt.net.cn

Features

Decoding & Display

- 2*HDMI@1080P; HDMI1 supports 4K
- Supports PS, RTP, TS, ES encapsulation formats (in platform running mode)
- Supports NTSC & PAL video formats
- H.265 HP/MP/BP and H.264 HP/MP/BP
- 4CH 8MP/5MP@30fps or 8CH 4MP/3MP@30fps or 16CH 1080P@30fps or 32CH 720P@30fps or 64CH D1 or lower
- G.711A/G.711U audio compression
- 1CH audio input; 1CH audio output

Stream Mode

- A&V streams can be directly acquired from TVT IPC/DVR/NVR by SDK private protocol
- A&V streams can be acquired from NVMS platform or encoding devices by RTSP/ RTP protocol
- A&V streams can be acquired from IPC by ONVIF protocol Device Management
- Supports multi-level device control (master-slave mode)
- A maximum of 64 decoders can be manageable

Decoding Control

- Supports live view and playback decoding
- 1/4/9/16/25/36 screen display mode
- Window opening, roaming
- View cameras or camera groups in sequence

Access

- Provides HTTP API protocol for the third-party
- Supports platform running mode and device running mode

Operation and Maintenance

- Supports device search
- Supports WEB client access, configuration and management
- Supports time zone, time and date settings
- Supports data port and HTTP port settings
- Supports data backup and restoration
- Supports remote reboot and one-button reset
- Supports online and U-disk upgrade
- Supports dual gigabit Ethernet ports, load balancing

Specifications

| | |
|---------------------|---|
| Model | TD-1102D |
| Compression Format | H.265/H.264 |
| Operating System | Embedded Linux |
| Video Output | HDMI × 2 HDMI1: 3840×2160/1920×1080/1280×1024 HDMI2:1920×1080/1280×1024 |
| Decoding Resolution | 8MP/5MP/4MP/3MP/1080P/960P/720P/WD1/D1/CIF |
| Decoding Capability | 4CH 8MP/5MP@30fps or 8CH 4MP/3MP@30fps or 16CH 1080P@30fps or 32CH 720P@30fps or 64CH D1 or lower |
| Frame rate | 1-25FPS/CH (PAL), 1-30FPS/CH (NTSC) |
| Screen display mode | 1/4/9/16/25/36 |
| Audio interface | Audio input × 1, Audio output × 1, support two-way talk |
| Network interface | RJ45×2, load balancing and hot spare |
| Alarm interface | Alarm input×8, Alarm output ×4 |
| USB interface | USB3.0 × 1, USB2.0 × 2 |
| Power Supply | DC12V |
| Temperature | -20 ℃ ~ 50 ℃ |
| Dimensions (mm) | 380 (W) × 268 (D) × 45(H) |

Dimensions

Unit: mm

