

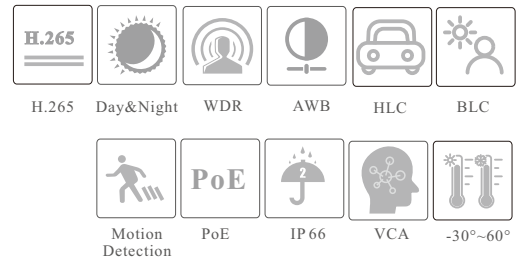
CAMERA

TD-9585E3B-DP

8MP Dual-lens Splicing Turret Network Camera



- H.265+/H.265/H.264+/H.264/MJPEG coding
- Max.resolution: 8MP (4640 × 1760)
- ICR auto switch, true day / night vision
- Support smart supplement light
- Up to 30 m IR night view distance; up to 20m white light distance
- 3D DNR, WDR, HLC, BLC and ROI coding
- Built-in micro SD card slot, up to 256GB
- DC12V/PoE power supply
- IP66 protection grade
- Support three streams
- Support mobile surveillance by smart phones with iOS and Android OS
- Support SMD
- Support P2P function
- Multiple smart events can be enabled at the same time
- Blue and red light warning (flashing alternately)
- Support user-defined warning voice import
- Dual system backup



en.tvt.net.cn

For more information, please visit our website

Shenzhen TVT DIGITAL TECHNOLOGY CO., LTD.

Address: 23rd Floor, Block B4, Building NO.9, Shenzhen Bay Eco-Technology Park, Nanshan District, Shenzhen, Guangdong Province, P.R.China

Tel: +86-755-36995888

Web site: <http://en.tvt.net.cn>

Fax: +86-755-33104777

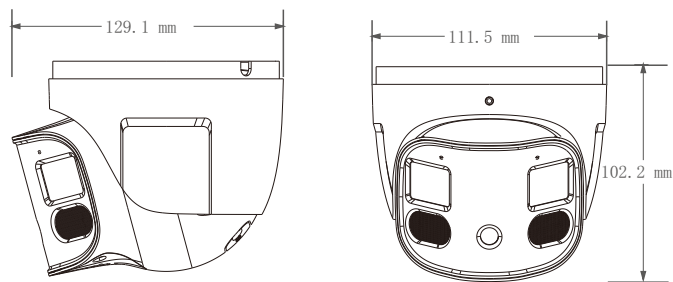
E-mail: overseas@tvt.net.cn

SPECIFICATIONS

Specifications	Model	TD-9585E3B-DP		
Camera				
Image Sensor	1 / 2.7" Progressive Scan CMOS × 2			
Max. Resolution	4640×1760			
Electronic Shutter	1 / 3 s ~ 1 / 100000 s			
Iris Type	Fixed Iris			
Min. Illumination	0.0032 lux@F1.6, AGC ON; 0 lux with LED ON			
Lens	2.8mm @F1.6			
Field of View	Horizontal: 180°; Vertical: 66°			
Lens Mount	M12			
Day & Night	Auto			
Wide Dynamic Range	Digital WDR			
BLC	Yes			
HLC	Yes			
Defog	Yes			
S/N Ratio	≥50dB			
Digital NR	3D DNR			
Angle Adjustment	Pan: 0°~360°; Tilt: 0°~75°; Rotation: 0°~360°			
Image				
Video Compression	Main stream: H.265+ / H.265 / H.264+ / H.264 Sub stream: H.265+ / H.265 / H.264+ / H.264 / MJPEG Third stream: H.265+ / H.265 / H.264+ / H.264 / MJPEG			
H.264 Compression Standard	Baseline Profile/Main Profile/High Profile			
Resolution	8MP (4640×1760), 6MP(3632×1632), 4MP(3200×1200), 2MP (2304×864), 2048×768, 1600×608, 1200×448, 960×368, 640×240			
Main Stream	8MP/6MP/4MP/2MP(60Hz: 1~30fps; 50Hz: 1~25fps)			
Sub Stream	2048×768/1600×608/1200×448(60Hz: 1~30fps; 50Hz: 1~25fps)			
Third Stream	1200×448/960×368/640×240(60Hz: 1~30fps; 50Hz: 1~25fps)			
Bit Rate	64 Kbps ~10Mbps			
Bit Rate Type	VBR / CBR			
Audio Compression	G711A / U			
Image Settings	ROI, Saturation, Brightness, Hue, Contrast, Wide Dynamic, Sharpness, NR, etc. adjustable through client software or web browser			
ROI	Each ROI to be configured separately			
Interfaces				
Network	RJ 45 10M/100M self-adaptive Ethernet port			
Video Output	No			
Audio	1CH audio input; 1CH audio output; 1CH built-in speaker; 2CH built-in MICs			
Storage	Built-in micro SD card slot; up to 256GB			
Reset	Yes			
Alarm	1CH alarm input; 1CH alarm output			
Intelligent Analytics				
Smart Event	Line crossing, region intrusion/entrance/exiting (human/vehicle classification), loitering detection, illegal parking detection, abandoned/missing object detection			
Statistics	Target counting by line/area, heat map			
Exception Detection	Scene change, video blur and abnormal color detection, audio exception			
Face Detection	Face detection and face capture			
Video Metadata	Simultaneously captures human body, motor vehicle and non-motor vehicle and extracts 13 human features, 4 motor vehicle features and 1 non-motor vehicle feature			
DORI Distance				
Lens	Detect	Observe	Recognize	Identify
2.8mm	60m(196ft)	24m(79ft)	12m(39ft)	6m(20ft)
Functions				
Remote Monitoring	Web Browser/TVT NVMS2.0/NVR/mobile APP			
Web Browser	Chrome 89.0+/Edge 89.0+/Firefox 87.0+/Safari 14.0+			
Online Connection	Support simultaneous monitoring for up to 10 users; Support multi-stream real time transmission			

Network Protocol	UDP, IPv4, IPv6, DHCP, NTP, RTSP, RTP, RTMP, RTCP, PPPoE, DDNS, SMTP, FTP, SNMP, HTTP, HTTP POST, 802.1x, UPnP, HTTPS, P2P, QoS
Interface Protocol	ONVIF
Storage	Network remote storage; micro SD card storage
Smart Alarm	Motion detection, SMD, SD card error, SD card full, IP address conflict, Network disconnection, sensor alarm, audio alarm, light alarm
General Function	Watermark, video mask, heartbeat, smart supplement light, ANR, cloud upgrade
Security	Video encryption, firmware encryption, HTTPS encryption, configuration encryption, illegal login lock, IP address filtering, 802.1x authentication, basic and token authentication for HTTP/RTSP
PoE	Yes, IEEE802.3af
Supplement Light Range	IR Range: up to 30m; White light range: up to 20m
Ingress Protection	IP66
Others	
Power Supply	DC12V/PoE
Power Consumption	PoE: max. 10.2W; DC12V: max. 9W
Storage Conditions	-30 °C ~ 65 °C (-22 °F ~ 149 °F), Humidity: less than 95 % (non-condensing)
Operating Conditions	-30 °C ~ 60 °C (-22 °F ~ 140 °F), Humidity: less than 95 % (non-condensing)
Dimensions (mm)	Ø 111.5 × 102.2
Weight (net)	Approx. 0.719KG
Installation	Ceiling mounting; Wall mounting
Certificate	CE, FCC
Environmental Protection	Directive EU RoHS, WEEE(2012/19/EU), directive 94/62/EC and REACH(EC1907/2006)

DIMENSIONS



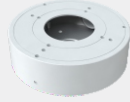
AVAILABLE MODEL

Available Model	TD-9585E3B-DP (D / PE / AW3)
-----------------	------------------------------

AVAILABLE ACCESSORIES



TD-YXH0302



TD-YXH0106



TD-YZJ0203



TD-YZJ0214



TD-YXH0302+
TD-YZJ0811



TD-YXH0302+
TD-YZJ0407+TD-YZJ0501



TD-YXH0302+
TD-YZJ0407+TD-YZJ0601



TD-YZJ0214+
TD-YZJ0501



TD-YZJ0214+
TD-YZJ0601